



aerospace
climate control
electromechanical
filtration
fluid & gas handling
hydraulics
pneumatics
process control
sealing & shielding



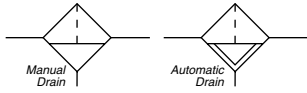
Stainless Steel FRLs

Air Preparation Units



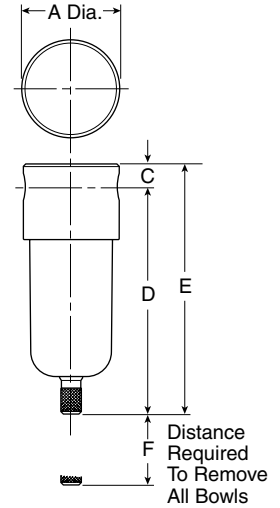
ENGINEERING YOUR SUCCESS.

PF504 Filter – Miniature



Features

- Stainless Steel Construction Handles Most Corrosive Environments
- Fluorocarbon Seals Standard
- Meets NACE Specifications MR-01-75/ISO 15156
- High Flow: 1/4" - 10.85 dm³/s[§]



Port Size	BSPB	NPT
	Manual Twist Drain	Manual Twist Drain
1/4"	PF504G02DHSS	PF504-02DHSS

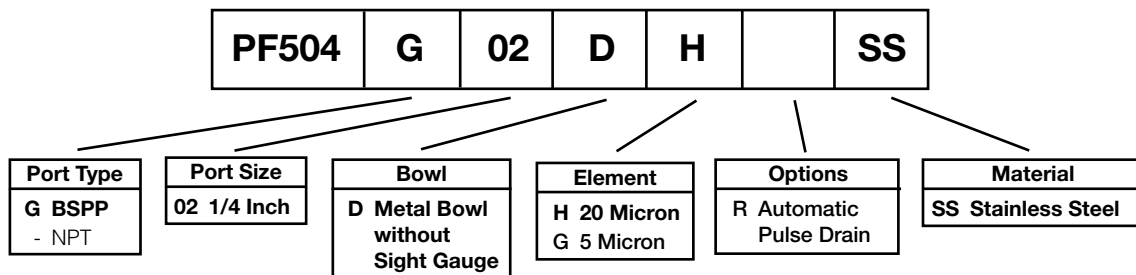
PF504 Filter Dimensions		
A 40	C 8	D 94
E 102	F 40	

Bold Items are Most Popular.
For other models refer to ordering information below.

[§] dm³/s = Flow at 6.2 bar and a 0.3 bar pressure drop.

(mm)

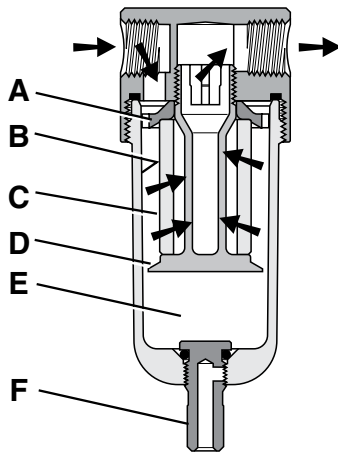
Ordering Information



BOLD ITEMS ARE MOST POPULAR.

Technical Specifications – PF504

Operation



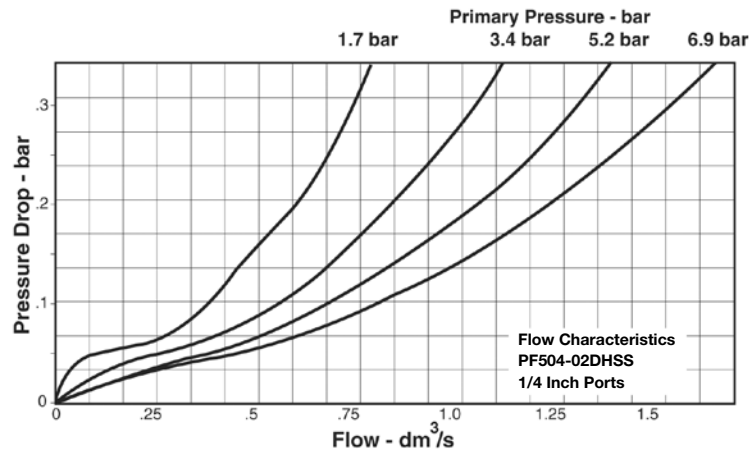
First Stage Filtration:

Air enters at inlet port and flows through deflector plate (A) which causes a swirling action. Liquids and coarse particles are forced to the bowl interior wall (B) by the centrifugal action of the swirling air. They are then carried down the bowl wall by the force of gravity. The baffle (D) separates the lower portion of the bowl into a "quiet zone" (E) where the removed liquid and particles collect, unaffected by the swirling air, and are therefore not reentrained in the flowing air.

Second Stage Filtration:

After liquids and large particles are removed in the first stages of filtration, the air flows through element (C) where smaller particles are filtered out. The filtered air then passes downstream. Collected liquids and particles in the "quiet zone" (E) should be drained before their level reaches a height where they would be reentrained in the flowing air. This can be accomplished by unscrewing the drain valve (F) slightly until the liquid begins to drain.

Technical Information



PF504 Filter Kits & Accessories

- Filter Element Kits –
 - Particulate (5 Micron) EK504VY
 - Particulate (20 Micron) EK504Y
- Manual Twist Drain –
 - Small (Old) SA600Y7-1SS
 - Large (New) TBA
- Pipe Nipple –
 - 1/4" NPT 316 Stainless Steel 616Y28-SS
 - 1/4" BSPT 316 Stainless Steel AC-2SS

Specifications

- Bowl Capacity 29 cm³
- Filter Rating 20 Micron
- Sump Capacity 12 cm³
- Port Threads 1/4 Inch

Pressure & Temperature Ratings –

- Manual Twist Drain 0 to 20.7 bar
-18°C to 82°C

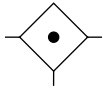
Note: Air must be dry enough to avoid ice formation at temperatures below 2°C.

- Weight 274 g

Materials of Construction

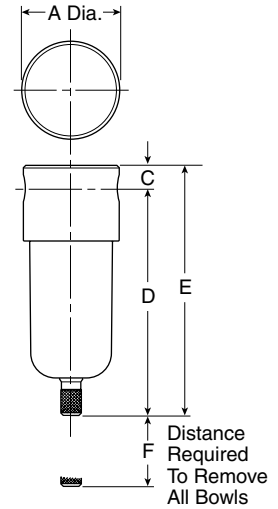
- Body 316 Stainless Steel
- Bowls 316 Stainless Steel
- Deflector Acetal
- Drain 316 Stainless Steel
- Element Holder Acetal
- Filter Element Polyethylene
- Seals Fluorocarbon

PF501 Coalescing Filter – Miniature



Features

- Stainless Steel Construction Handles Most Corrosive Environments
- Meets NACE Specifications MR-01-75/ISO 15156
- High Flow: 1/4" - 755 dm³/s[§]



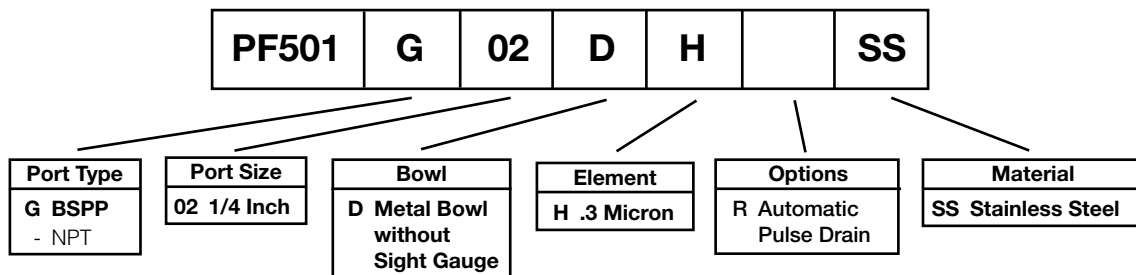
Port Size	BSPP	NPT
	Manual Twist Drain	Manual Twist Drain
1/4"	PF501G02DHSS	PF501-02DHSS

PF501 Coalescing Filter Dimensions		
A 40	C 8	D 94
E 102	F 40	

Bold Items are Most Popular.
 For other models refer to ordering information below.
[§] dm³/s = Flow at 6.2 bar and a 0.3 bar pressure drop.

(mm)

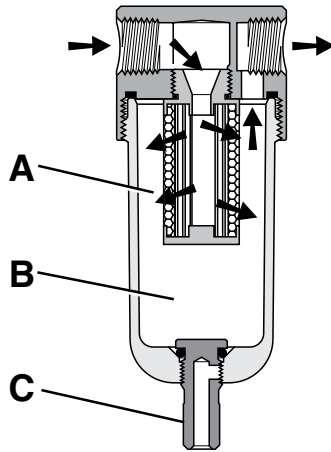
Ordering Information



BOLD ITEMS ARE MOST POPULAR.

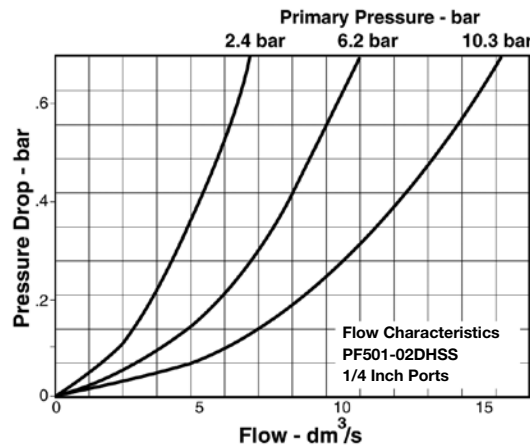
Technical Specifications – PF501

Operation



The contaminated air enters the element interior and is forced through a thick membrane (A) of “borosilicate” glass fibers coated with epoxy. Flow then passes through the element, and at this stage 99.97% of the sub micron particles have been removed from the air stream. The tiny droplets coalesce together and are collected from the filter element by the outer drain layer. The clean, filtered air now passes through and out into the pneumatic system. The air line coalescing filter removes liquid aerosols and sub-micron particulate matter. Collected liquids and particles in the “quiet zone” (B) should be drained before their level reaches a height where they would be reentrained in the flowing air. This can be accomplished by unscrewing the drain valve (C) slightly until the liquid begins to drain.

Technical Information



F501 Filter Kits & Accessories

- Filter Element Kits –
 - 0.3 MicronEKF31
- Manual Twist Drain –
 - Small (Old) SA600Y7-1SS
 - Large (New) TBA
- Pipe Nipple –
 - 1/4" NPT 316 Stainless Steel 616Y28-SS
 - 1/4" BSPT 316 Stainless Steel AC-2SS

Specifications

- Bowl Capacity 29 cm³
- Filter Rating 0.3 Micron
- Port Threads 1/4 Inch

Pressure & Temperature Ratings –

- Manual Twist Drain 0 to 20.7 bar
- -18°C to 82°C

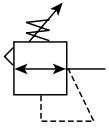
Note: Air must be dry enough to avoid ice formation at temperatures below 2°C.

- Sump Capacity 12 cm³
- Weight 275 g

Materials of Construction

- Body 316 Stainless Steel
- Bowls 316 Stainless Steel
- Drain 316 Stainless Steel
- Element Holder Acetal
- Filter Element Borosilicate Fiber
- Seals Fluorocarbon

PR354, PR364 Regulator – Miniature



Features

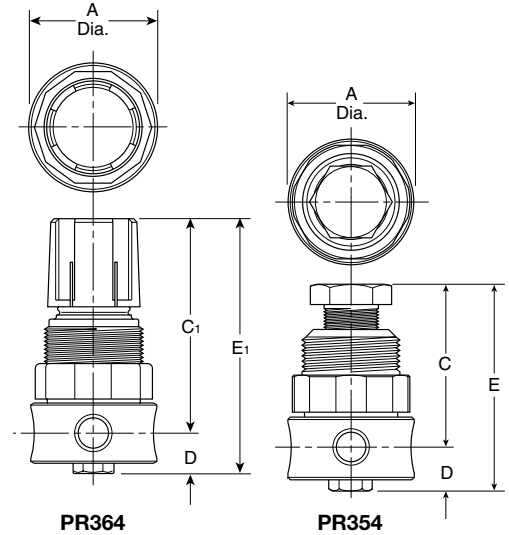
- Stainless Steel Construction Handles Most Corrosive Environments
- Large Diaphragm to Valve Area Ratio for Precise Regulation and High Flow Capacity
- Meets NACE Specifications MR-01-75/ISO 15156
- High Flow: 1/4" – 5.75 dm³/s[§]



PR364



PR354



Series	Adjustment Type	Port Size	BSP	NPT
PR364	Knob	1/4"	PR364G02CSS	PR364-02CSS
PR354	All Metal	1/4"	PR354G02CSS	PR354-02CSS

PR354, PR364 Regulator Dimensions		
A	C	C ₁
40	51	65
D	E	E ₁
13	64	78

Standard part numbers shown bold.

For other models refer to ordering information below.

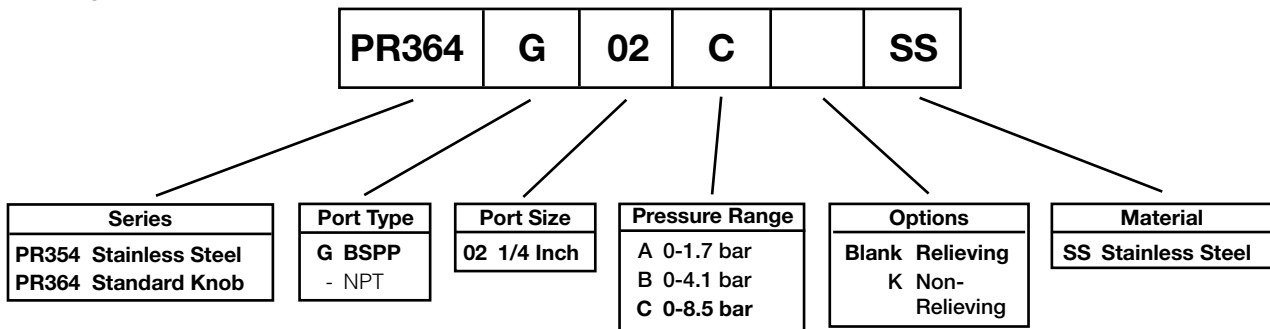
[§] dm³/s = 7 bar inlet pressure with 5.5 bar set pressure and 1 bar pressure drop.

(mm)
NOTE: 32mm dia. hole required for panel mounting.

⚠ WARNING

**Product rupture can cause serious injury.
Do not connect regulator to bottled gas.
Do not exceed maximum primary pressure rating.**

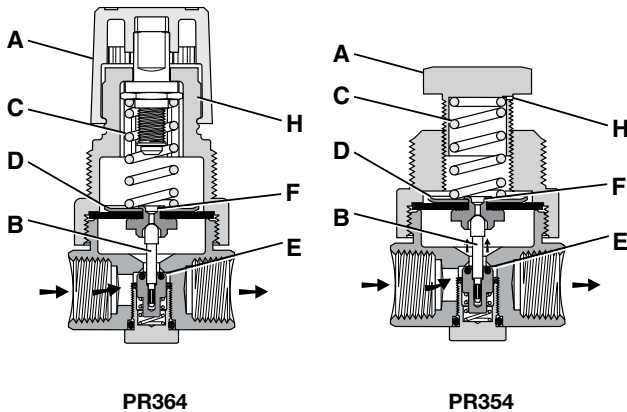
Ordering Information



BOLD ITEMS ARE MOST POPULAR.

Technical Specifications – PR354, PR364

Operation

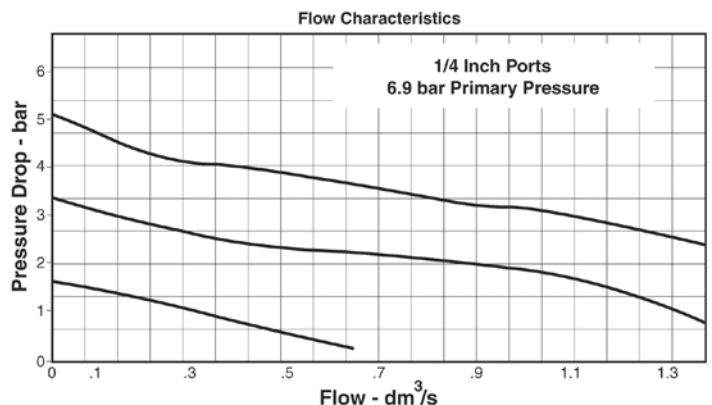


With the adjusting knob (A) turned fully counter-clockwise (no spring load), and pressure supplied to the regulator inlet port, the valve poppet assembly (B) is closed. Turning the adjusting knob clockwise applies a load to control spring (C). This load causes the diaphragm (D) and the valve poppet assembly (B) to move downward allowing flow across the seat area (E) created between the poppet assembly and the seat. Pressure in the downstream line is sensed below the diaphragm (D) and offsets the load of spring (C). As downstream pressure rises, poppet assembly (B) and diaphragm (D) move upward until the area (E) is closed and the load of the spring (C) and pressure under diaphragm (D) are in balance. A reduced outlet pressure has now been obtained, depending on spring load. Creating a demand downstream, such as opening a valve, results in a reduced pressure under the diaphragm (D). The load of control spring (C) now causes the poppet assembly to move downward opening seat area (E) allowing air to flow to meet the downstream demand. The flow of downstream air is metered by the amount of opening (E). Should downstream pressure exceed the desired regulated pressure, the excess pressure will cause the diaphragm (D) to move upward against control spring (C), open vent hole (F), and vent the excess pressure to atmosphere through the hole in the bonnet (H). (This occurs in the relieving type regulator

Technical Information

CAUTION:

REGULATOR PRESSURE ADJUSTMENT –
The working range of knob adjustment is designed to permit outlet pressures within their full range. Pressure adjustment beyond this range is also possible because the knob is not a limiting device. This is a common characteristic of most industrial regulators, and limiting devices may be obtained only by special design.
For best performance, regulated pressure should always be set by increasing the pressure up to the desired setting.



R354, R364 Regulator Kits & Accessories

R354 Bonnet Kit	CKR354YSS
R364 Bonnet Kit (Knob Included)	CKR364YSS
Gauge –	
0 to 10 bar	M1/4G40S-10
Panel Mount Bracket (Stainless)	161X57-SS
Panel Mount Nut –	
Stainless	R05X51SS
Pipe Nipple –	
1/4" NPT 316 Stainless Steel	616Y28-SS
1/4" BSPT 316 Stainless Steel	AC-2SS
Service Kit –	
Relieving	RKR364YSS
Non-Relieving	RKR364KYSS

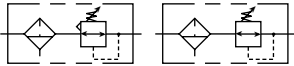
Specifications

Gauge Port	1/4 Inch
Operation	Fluorocarbon Diaphragm
Port Threads	1/4 Inch
Pressure & Temperature Ratings –	20.7 bar 4°C to 66°C
Note: Air must be dry enough to avoid ice formation at temperatures below 2°C.	
Weight	230 g

Materials of Construction

Adjustment Mechanism / Springs	316 Stainless Steel
Adjusting Knob (PR354)	316 Stainless Steel
Adjusting Knob (PR364)	Polypropylene
Body	316 Stainless Steel
Bonnet (PR354)	316 Stainless Steel
Bonnet (PR364)	Acetal
Bottom Plug	316 Stainless Steel
Poppet	316 Stainless Steel
Seals	Fluorocarbon

PB548, PB558 Filter / Regulator – Miniature



Features

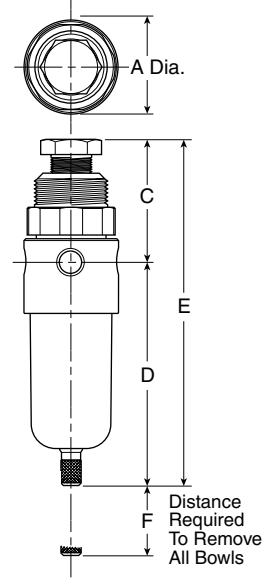
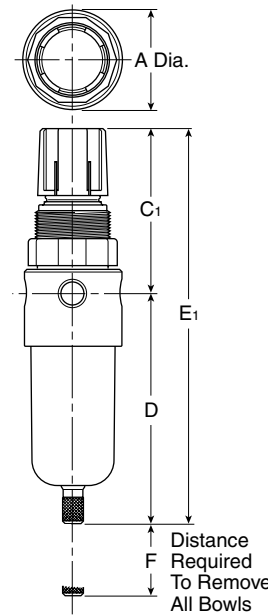
- Stainless Steel Construction Handles Most Corrosive Environments
- Large Diaphragm to Valve Area Ratio for Precise Regulation and High Flow Capacity
- Meets NACE Specifications MR-01-75/ISO 15156.
- High Flow: 1/4" – 5.75 dm³/s[§]



PB548



PB558



Port Size	BSPP	NPT
1/4"	PB548G02DHCSS	PB548-02DHCSS
1/4"	PB558G02DHCSS	PB558-02DHCSS

Standard part numbers shown bold.

For other models refer to ordering information below.

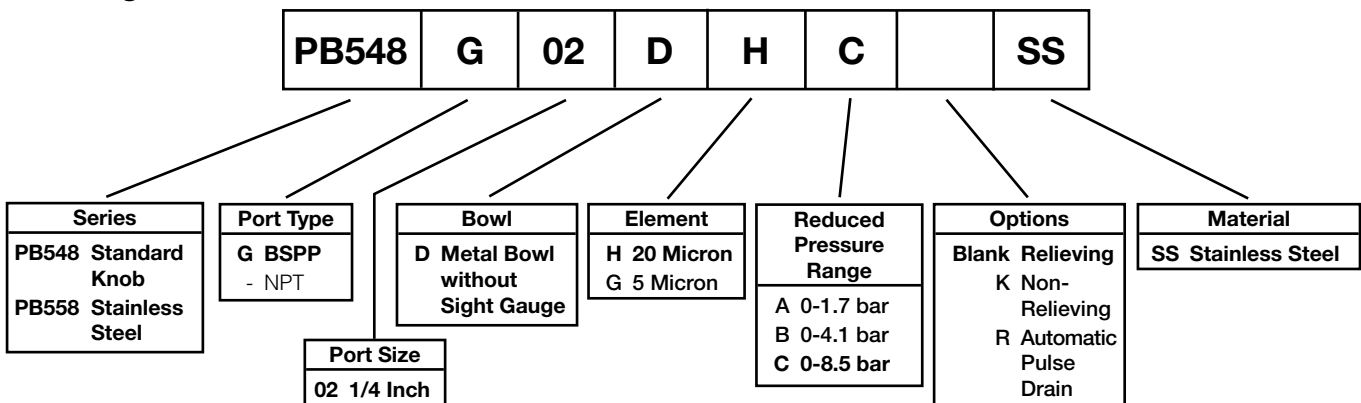
[§] dm³/s = 7 bar inlet pressure with 5.5 bar set pressure and 1 bar pressure drop.

PB548, PB558 Piggyback Dimensions		
A	C	C ₁
40	67	55
D	E	E ₁
92	147	78
F		
40		

(mm)
NOTE: 32mm dia. hole required for panel mounting.

⚠ WARNING
<p>Product rupture can cause serious injury. Do not connect regulator to bottled gas. Do not exceed maximum primary pressure rating.</p>

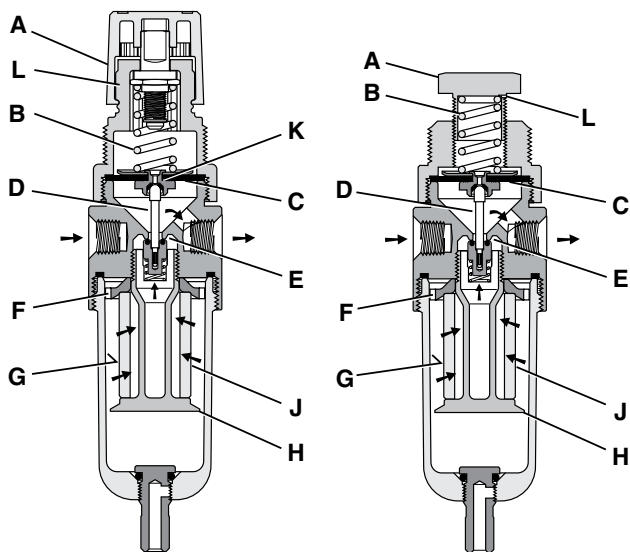
Ordering Information



BOLD ITEMS ARE MOST POPULAR.

Technical Specifications – PB548, PB558

Operation



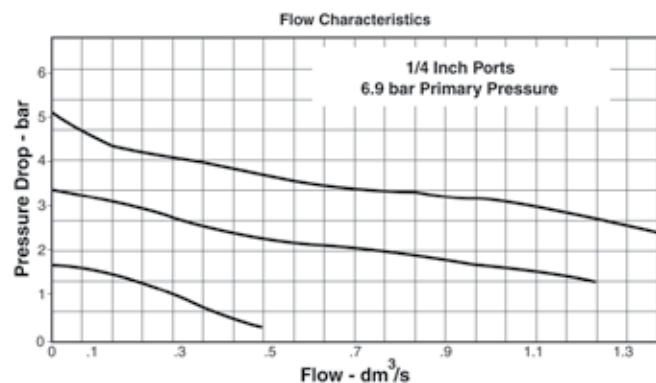
Turning the adjusting knob clockwise applies a load to control spring (B) which forces diaphragm (C) and valve poppet assembly (D) to move downward allowing filtered air to flow through the seat area (E) created between the poppet assembly and the seat. "First stage filtration". Air pressure supplied to the inlet port is directed through deflector plate (F) causing a swirling centrifugal action forcing liquids and coarse particles to the inner bowl wall (G) and down below the lower baffle (H) to the quiet zone. After liquids and large particles are removed in the first stage of filtration "second stage filtration" occurs as air flows through element (J) where smaller particles are filtered out and retained. The air flow now passes through seat area (E) to the outlet port of the unit. Pressure in the downstream line is sensed below the diaphragm (C) and offsets the load of spring (B). When downstream pressure reaches the set-point, poppet valve assembly (D) and diaphragm (C) move upward closing seat area (E). Should downstream pressure exceed the desired regulated pressure, the excess pressure will cause the diaphragm (C) to move upward opening vent hole (K) venting the excess pressure to atmosphere through the hole in the bonnet (L). (This occurs in the standard relieving type filter/

Technical Information

CAUTION:

REGULATOR PRESSURE ADJUSTMENT – The working range of knob adjustment is designed to permit outlet pressures within their full range. Pressure adjustment beyond this range is also possible because the knob is not a limiting device. This is a common characteristic of most industrial regulators, and limiting devices may be obtained only by special design.

For best performance, regulated pressure should always be set by increasing the pressure up to the desired setting.



PB548, B558 Regulator Kits & Accessories

Filter Element Kits –	
Particulate (5 Micron)	EK504VY
Particulate (20 Micron)	EK504Y
Gauge –	
0 - 10 bar	M1/4G40S-10
Manual Twist Drain	SA600Y7-1SS
Panel Mount Bracket (Stainless)	161X57-SS
Panel Mount Nut –	
Stainless	R05X51SS
Plastic	R05X51-P
Pipe Nipple –	
1/4" NPT 316 Stainless Steel	616Y28-SS
1/4" BSPT 316 Stainless Steel	AC-2SS
Service Kit –	
Relieving	RK549YSS
Non-Relieving	RK548YSS

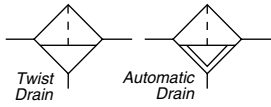
Specifications

Bowl Capacity	29 cm ³
Filter Rating	20 Micron
Gauge Port	1/4 Inch
Operation	Fluorocarbon Diaphragm
Port Threads	1/4 Inch
Pressure & Temperature Ratings –	20.7 bar max. -18°C to 66°C
Note: Air must be dry enough to avoid ice formation at temperatures below 2°C.	
Sump Capacity	12 cm ³
Weight	270 G

Materials of Construction

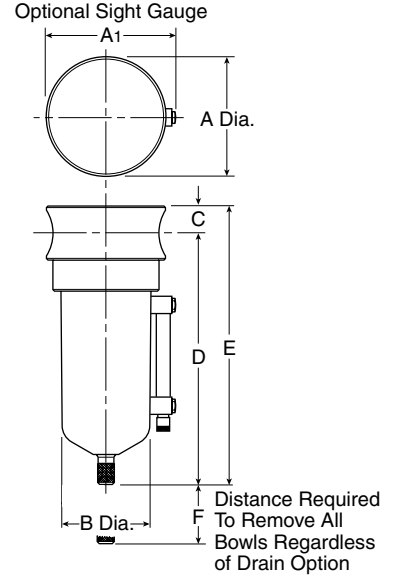
Adjustment Mechanism / Springs	316 Stainless Steel
Body	316 Stainless Steel
Bonnet (PB548)	Acetal
Bonnet (PB558)	316 Stainless Steel
Bottom Plug	316 Stainless Steel
Knob (PB548)	Polypropylene
Knob (PB558)	316 Stainless Steel
Poppet	316 Stainless Steel
Seals	Fluorocarbon

PF10 Filter – Standard



Features

- Stainless Steel Construction Handles Most Corrosive Environments
- Meets NACE Specifications MR-01-75/ISO 15156
- High Flow: 1/2" - 34 dm³/s[§]



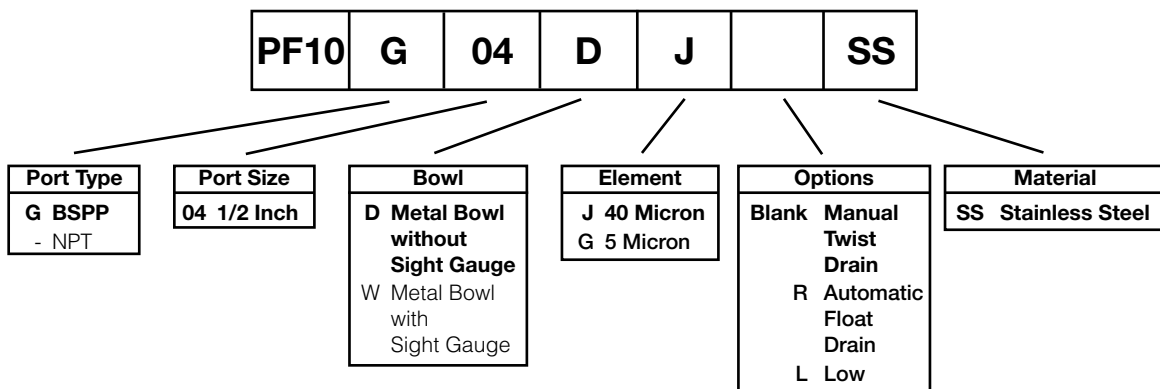
Port Size	BSPP		NPT	
	Manual Twist Drain	Automatic Float Drain	Manual Twist Drain	Automatic Float Drain
1/2"	Metal Bowl Without Sight Gauge			
	PF10-04DJSS	PF10-04DJRSS	PF10G04DJSS	PF10G04DJRSS

PF10 Filter Dimensions		
A 60	A1 64	B 44
C 14	D 127	E 141
F 54		

Bold Items are Most Popular.
 For other models refer to ordering information below.
[§] dm³/s = Flow at 6.2 bar and a 0.3 bar pressure drop.

(mm)

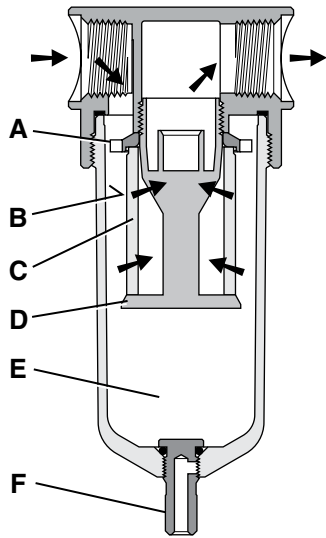
Ordering Information



BOLD ITEMS ARE MOST POPULAR.

Technical Specifications – PF10

Operation



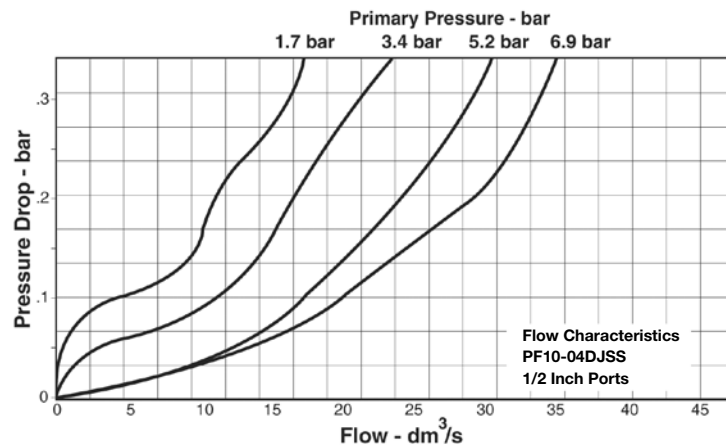
First Stage Filtration:

Air enters at inlet port and flows through deflector plate (A) which causes a swirling action. Liquids and coarse particles are forced to the bowl interior wall (B) by the centrifugal action of the swirling air. They are then carried down the bowl wall by the force of gravity. The baffle (D) separates the lower portion of the bowl into a “quiet zone” (E) where the removed liquid and particles collect, unaffected by the swirling air, and are therefore not reentrained into the flowing air.

Second Stage Filtration:

After liquids and large particles are removed in the first stages of filtration, the air flows through element (C) where smaller particles are filtered out. The filtered air then passes downstream. Collected liquids and particles in the “quiet zone” (E) should be drained before their level reaches a height where they would be reentrained in the flowing air. This can be accomplished by unscrewing the drain valve (F) slightly until the liquid begins to drain.

Technical Information



PF10 Filter Kits & Accessories

- Drain Kit –
 - Automatic Float Drain SA602MDSS
 - Manual Twist Drain–
 - Small (Old) SA600Y7-1SS
 - Large (New) TBA
- Filter Element Kits –
 - Particulate (40 Micron) EK55J
 - Particulate (5 Micron) EK55G
- Pipe Nipple – 1/2" NPT 316 Stainless Steel..... 616A28-SS
 - 1/2" BSPT 316 Stainless Steel..... AC-4SS

- Manual Twist Drain (W).....0 to 17.2 bar
-18°C to 66°C
- Automatic Float Drain1 to 12 bar
4°C to 52°C

Note: Air must be dry enough to avoid ice formation at temperatures below 2°C.

Weight 850 g

Specifications

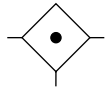
- Bowl Capacity 118 cm³
- Filter Rating 40 Micron
- Sump Capacity 50 cm³
- Port Threads 1/2 Inch
- Pressure & Temperature Ratings –
 - Manual Twist Drain (D)0 to 20.7 bar
-18°C to 82°C

Materials of Construction

- Body 316 Stainless Steel
- Bowls 316 Stainless Steel
- Deflector Acetal
- Drain 316 Stainless Steel
- Element Holder Acetal
- Filter Element Polyethylene
- Seals Fluorocarbon
- Sight Gauge Isoplast

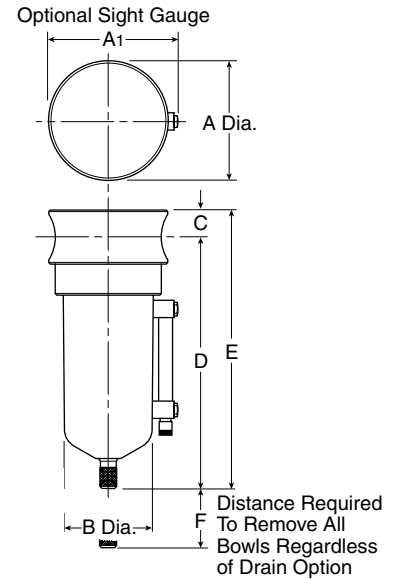


PF11 Coalescing Filter – Standard



Features

- Stainless Steel Construction Handles Most Corrosive Environments
- Meets NACE Specifications MR-01-75/ISO 15156
- High Flow: 1/2" - 21 dm³/s[§]



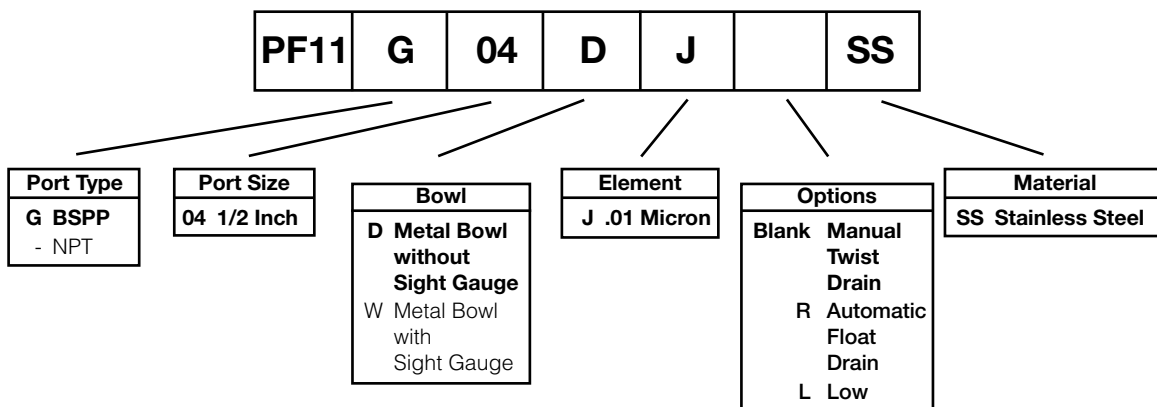
Port Size	BSPP		NPT	
	Manual Twist Drain	Automatic Float Drain	Manual Twist Drain	Automatic Float Drain
1/2"	Metal Bowl Without Sight Gauge			
	PF11-04DJSS	PF11-04DJRSS	PF11G04DJSS	PF11G04DJRSS

F11 Coalescing Filter Dimensions		
A 60	A1 64	B 44
C 14	D 127	E 141
F 54		

Bold Items are Most Popular.
 For other models refer to ordering information below.
[§] dm³/s = Flow at 6.2 bar and a 0.3 bar pressure drop.

(mm)

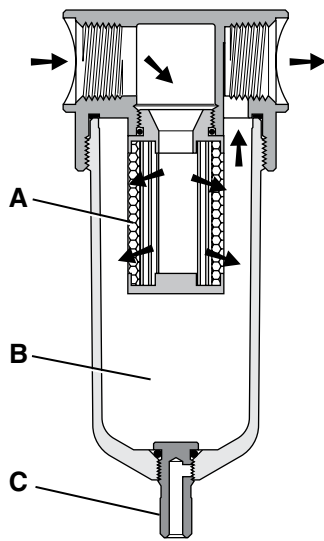
Ordering Information



BOLD ITEMS ARE MOST POPULAR.

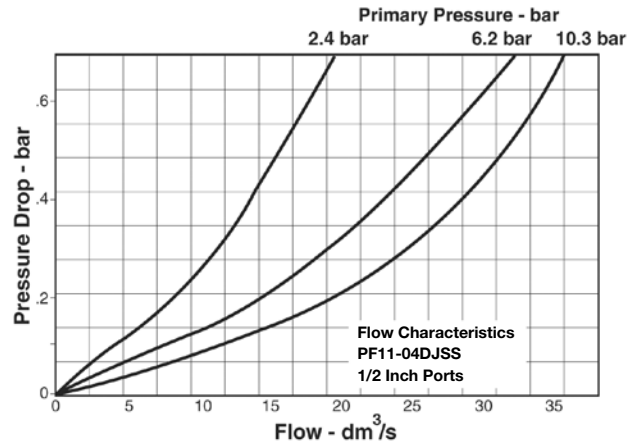
Technical Specifications – PF11

Operation



The contaminated air enters the element interior and is forced through a thick membrane (A) of “borosilicate” glass fibers coated with epoxy. Flow then passes through the element, and at this stage 99.97% of the sub micronic particles have been removed from the air stream. The tiny droplets coalesce together and are collected from the filter element by the outer drain layer. The clean, filtered air now passes through and out into the pneumatic system. The air line coalescing filter removes liquid aerosols and sub-micron particulate matter. Collected liquids and particles in the “quiet zone” (B) should be drained before their level reaches a height where they would be reentrained in the flowing air. This can be accomplished by unscrewing the drain valve (C) slightly until the liquid begins to drain.

Technical Information



F11 Filter Kits & Accessories

- Drain Kit –
 - Automatic Float Drain SA602MDSS
 - Manual Twist Drain–
 - Small (Old) SA600Y7-1SS
 - Large (New) TBA
- Filter Element Kits –
 - 0.3 MicronEKF71
- Pipe Nipple –
 - 1/2" NPT 316 Stainless Steel 616A28-SS
 - 1/2" BSPT 316 Stainless Steel..... AC-4SS

- Manual Twist Drain (W).....0 to 17.2 bar
-18°C to 66°C
- Automatic Float Drain0 to 12 bar
4°C to 52°C

Note: Air must be dry enough to avoid ice formation at temperatures below 2°C.

Weight 850 g

Specifications

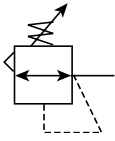
- Bowl Capacity 118 cm³
- Filter Rating0.01 Micron
- Sump Capacity 50 cm³
- Port Threads 1/2 Inch
- Pressure & Temperature Ratings –
 - Manual Twist Drain0 to 20.7 bar
-18°C to 82°C

Materials of Construction

- Body 316 Stainless Steel
- Bowls 316 Stainless Steel
- Drain 316 Stainless Steel
- Element Holder Acetal
- Filter Element Borosilicate Fiber
- Seals Fluorocarbon
- Sight Gauge Isoplast



PR10, PR11 Regulator – Standard



Features

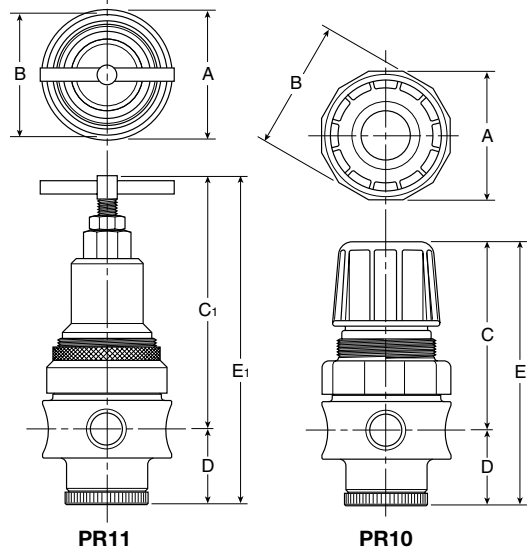
- Stainless Steel Construction Handles Most Corrosive Environments
- Large Diaphragm to Valve Area Ratio for Precise Regulation and High Flow Capacity
- Meets NACE Specifications MR-01-75/ISO 15156
- Low Temperature Version Available
- High Flow: 1/2" – 5.75 dm³/s[§]



PR11



PR10



Port Size	BSPP	NPT
1/2"	PR10G04CSS	PR10-04CSS
1/2"	PR11G04CSS	PR11-04CSS

Standard part numbers shown bold.

For other models refer to ordering information below.

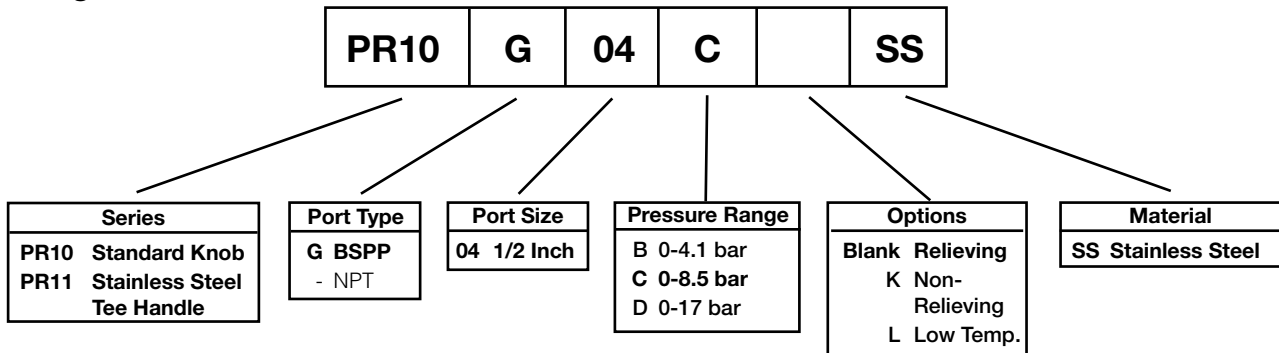
[§] dm³/s = 7 bar inlet pressure with 5.5 bar set pressure and 1 bar pressure drop.

PR10, PR11 Regulator Dimensions		
A 60	B 62	C 91
C₁ 119	D 35	E 126
E₁ 154		

(mm)
NOTE: 44mm dia. hole required for panel mounting.

⚠ WARNING
<p>Product rupture can cause serious injury. Do not connect regulator to bottled gas. Do not exceed maximum primary pressure rating.</p>

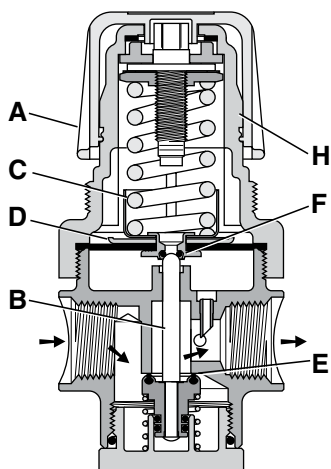
Ordering Information



BOLD ITEMS ARE MOST POPULAR.

Technical Specifications – PR10, PR11

Operation



With the adjusting knob (A) turned fully counter-clockwise (no spring load), and pressure supplied to the regulator inlet port, the valve poppet assembly (B) is closed. Turning the adjusting knob clockwise applies a load to control spring (C). This load causes the diaphragm (D) and the valve poppet assembly (B) to move downward allowing flow across the seat area (E) created between the poppet assembly and the seat. Pressure in the downstream line is sensed below the diaphragm (D) and offsets the load of spring (C). As downstream pressure rises, poppet assembly (B) and diaphragm (D) move upward until the area (E) is closed and the load of the spring (C) and pressure under diaphragm (D) are in balance. A reduced outlet pressure has now been obtained, depending on spring load. Creating a demand downstream, such as opening a valve, results in a reduced pressure under the diaphragm (D). The load of control spring (C) now causes the poppet assembly to move downward opening seat area (E) allowing air to flow to meet the downstream demand. The flow of downstream air is metered by the amount of opening (E).

Should downstream pressure exceed the desired regulated pressure, the excess pressure will cause the diaphragm (D) to move upward against control spring (C), open vent hole (F), and vent the excess pressure to atmosphere through the hole in the bonnet (H). (This occurs in the relieving type regulator only.)

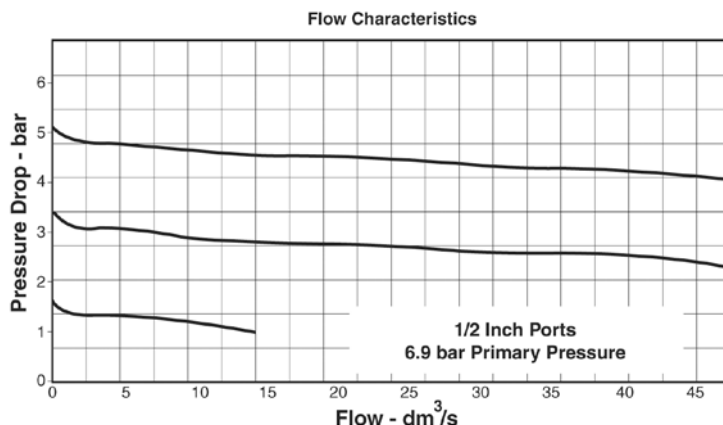
Technical Information

CAUTION:

REGULATOR PRESSURE ADJUSTMENT –

The working range of knob adjustment is designed to permit outlet pressures within their full range. Pressure adjustment beyond this range is also possible because the knob is not a limiting device. This is a common characteristic of most industrial regulators, and limiting devices may be obtained only by special design.

For best performance, regulated pressure should always be set by increasing the pressure



PR10, PR11 Regulator Kits & Accessories

R10 Bonnet Kit (Knob Included)	CKR10YSS
R11 Bonnet Kit.....	CKR11YSS
Gauge –	
0 - 10 bar.....	M1/4G40S-10
Panel Mount Bracket (Stainless).....	R10Y57-SS
Panel Mount Nut –	
Stainless	R10X51SS
Pipe Nipple –	
1/2" NPT 316 Stainless Steel	616A28-SS
1/2" BSPT 316 Stainless Steel.....	AC-4SS
Service Kit –	
Relieving	RKR10YSS
Non-Relieving	RKR10KYSS

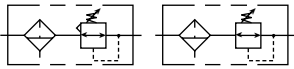
Specifications

Gauge Port	1/4 Inch
Operation	Fluorocarbon Diaphragm
Port Threads	1/2 Inch
Pressure & Temperature Ratings –	20.7 bar max.
	-18°C to 66°C
Note: Air must be dry enough to avoid ice formation at temperatures below 2°C.	
Weight	810 G

Materials of Construction

Adjustment Mechanism / Springs	316 Stainless Steel
Body	316 Stainless Steel
Bonnet / Tee Handle (PR11).....	316 Stainless Steel
Bonnet / Knob (PR10)	Acetal
Bottom Plug	316 Stainless Steel
Poppet	316 Stainless Steel
Seals	Fluorocarbon

PB11, PB12 Filter / Regulator – Standard



Features

- Stainless Steel Construction Handles Most Corrosive Environments
- Large Diaphragm to Valve Area Ratio for Precise Regulation and High Flow Capacity
- Meets NACE Specifications MR-01-75/ISO-15156
- Low Temperature Version Available
- High Flow: 1/2" – 34 dm³/s[§]

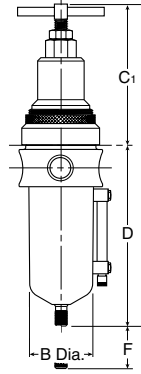
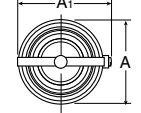


PB12



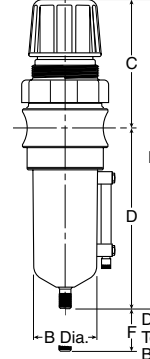
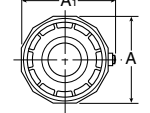
PB11

Optional Sight Gauge



PB12

Optional Sight Gauge



PB11

Distance Required To Remove All Bowls Regardless of Drain Option

Distance Required To Remove All Bowls Regardless of Drain Option

Port Size	Adjustment Type	BSPP		NPT	
		Manual Twist Drain	Automatic Float Drain	Manual Twist Drain	Automatic Float Drain
1/2"	Metal Bowl without Sight Gauge				
	Knob	PB11-04DJCSS	PB11-04DJCRSS	PB11G04DJCSS	PB11G04DJCRSS
	Tee-Handle	PB12-04DJCSS	PB12-04DJCRSS	PB12G04DJCSS	PB12G04DJCRSS

PB11, PB12 Piggyback Dimensions		
A	A ₁	B
60	64	44
C	C ₁	D
91	55	127
E	E ₁	F
218	218	54

Standard part numbers shown bold. For other models refer to ordering information below.

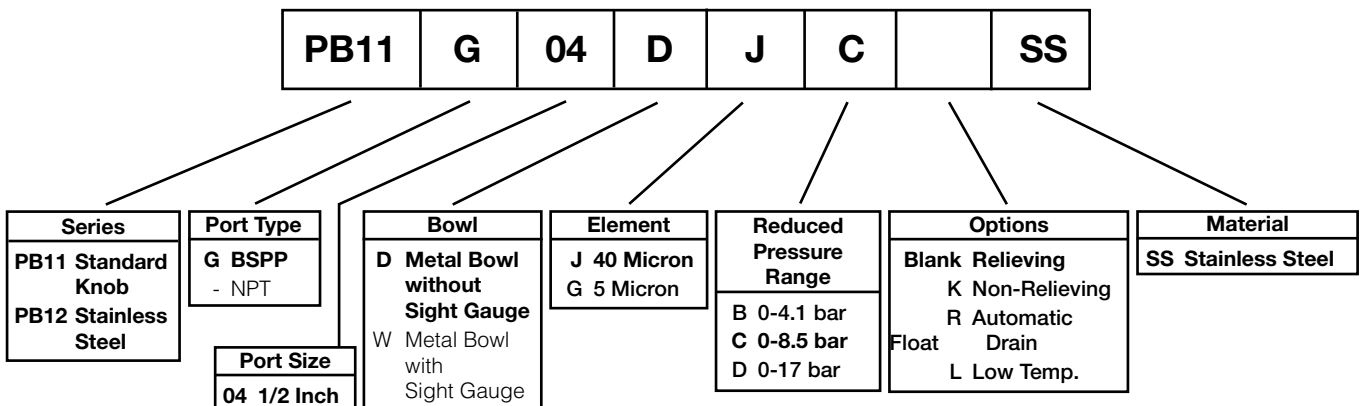
[§] dm³/s = 7 bar inlet pressure with 5.5 bar set pressure and 1 bar pressure drop.

(mm)
NOTE: 44mm dia. hole required for panel mounting.

⚠ WARNING

**Product rupture can cause serious injury.
Do not connect regulator to bottled gas.
Do not exceed maximum primary pressure rating.**

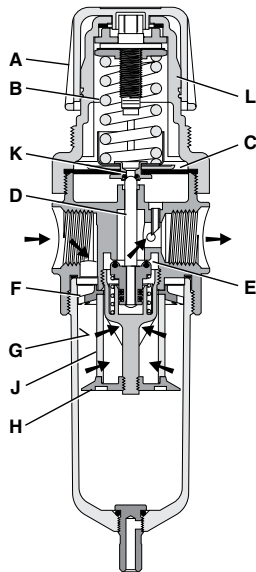
Ordering Information



BOLD ITEMS ARE MOST POPULAR.

Technical Specifications – PB11, PB12

Operation



Turning the adjusting knob clockwise applies a load to control spring (B) which forces diaphragm (C) and valve poppet assembly (D) to move downward allowing filtered air to flow through the seat area (E) created between the poppet assembly and the seat. "First stage filtration". Air pressure supplied to the inlet port is directed through deflector plate (F) causing a swirling centrifugal action forcing liquids and coarse particles to the inner bowl wall (G) and down below the lower baffle (H) to the quiet zone. After liquids and large particles are removed in the first stage of filtration "second stage filtration" occurs as air flows through element (J) where smaller particles are filtered out and retained. The air flow now passes through seat area (E) to the outlet port of the unit. Pressure in the downstream line is sensed below the diaphragm (C) and offsets the load of spring (B). When downstream pressure reaches the set-point, poppet valve assembly (D) and diaphragm (C) move upward closing seat area (E). Should downstream pressure exceed the desired regulated pressure, the excess pressure will cause the diaphragm (C) to move upward opening vent hole (K) venting the excess pressure to atmosphere through the hole in the bonnet (L). (This occurs in the standard relieving

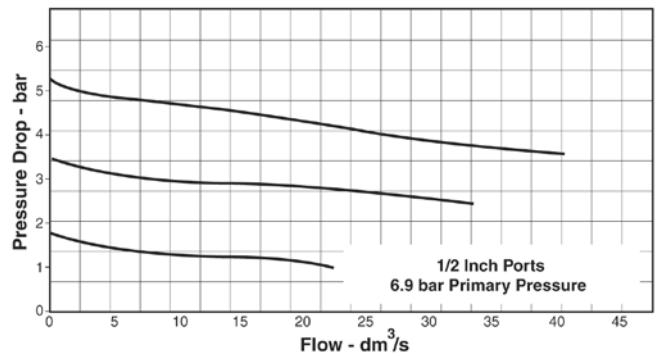
Technical Information

CAUTION:

REGULATOR PRESSURE ADJUSTMENT – The working range of knob adjustment is designed to permit outlet pressures within their full range. Pressure adjustment beyond this range is also possible because the knob is not a limiting device. This is a common characteristic of most industrial regulators, and limiting devices may be obtained only by special design.

For best performance, regulated pressure should always be set by increasing the pressure up to the desired setting.

Flow Characteristics
PB11-04DJC-SS



PB11, PB12 Regulator Kits & Accessories

- Drain Kit –
 - Automatic Float Drain SA602MDSS
 - Manual Twist Drain SA600Y7-1SS
- Filter Element Kits –
 - Particulate (40 Micron) EKF10Y
 - Particulate (5 Micron) EKF10VY
- Gauge –
 - 0 - 10 bar M1/4G40S-10
- Panel Mount Bracket (Stainless) R10Y57-SS
- Panel Mount Nut –
 - Stainless R10X51SS
- Pipe Nipple –
 - 1/2" NPT 316 Stainless Steel 616A28-SS
 - 1/2" BSPT 316 Stainless Steel AC-4SS
- Service Kit –
 - Relieving RKR10YSS
 - Non-Relieving RKR10KYSS

Specifications

- Bowl Capacity 118 cm³
- Filter Rating 40 Micron
- Gauge Port 1/4 Inch
- Operation Fluorocarbon Diaphragm
- Port Threads 1/2 Inch
- Pressure & Temperature Ratings –
 - Metal Bowl (D) 20.7 bar max.
-18°C to 66°C
 - Metal Bowl (W) 0 to 17.2 bar
-18°C to 66°C
 - Automatic Float Drain 1 to 12 bar
4°C to 52°C

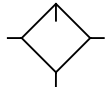
Note: Air must be dry enough to avoid ice formation at temperatures below 2°C.

- Sump Capacity 50 cm³
- Weight 1.09 kg

Materials of Construction

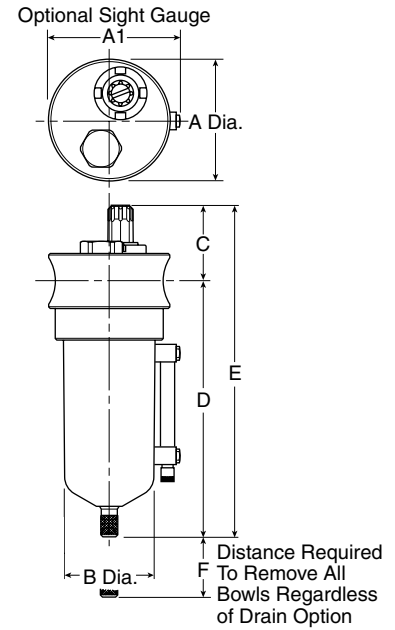
- Adjustment Mechanism / Springs 316 Stainless Steel
- Body 316 Stainless Steel
- Bonnet / Knob (PB11) Acetal
- Bonnet / Tee Handle (PB12) 316 Stainless Steel
- Bottom Plug 316 Stainless Steel
- Poppet 316 Stainless Steel
- Seals Fluorocarbon
- Sight Gauge Isoplast

PL10 Lubricator – Standard



Features

- Stainless Steel Construction Handles Most Corrosive Environments
- Fillable Under Pressure
- Meets NACE Specifications MR-01-75/ISO 15156
- High Flow: 1/2" - 47 dm³/s[§]



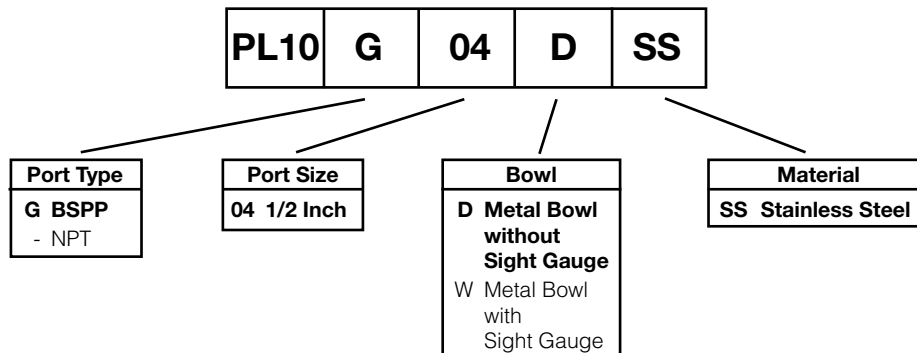
Port Size	BSPP	NPT
	Manual Twist Drain	Manual Twist Drain
1/2"	Metal Bowl Without Sight Gauge	
	PL10-04DSS	PL10G04DSS

PL10 Lubricator Dimensions		
A	A1	B
60	64	44
C	D	E
46	127	173
F		
89		

Bold Items are Most Popular.
 For other models refer to ordering information below.
[§] dm³/s = Flow at 6.2 bar and a 0.3 bar pressure drop.

(mm)

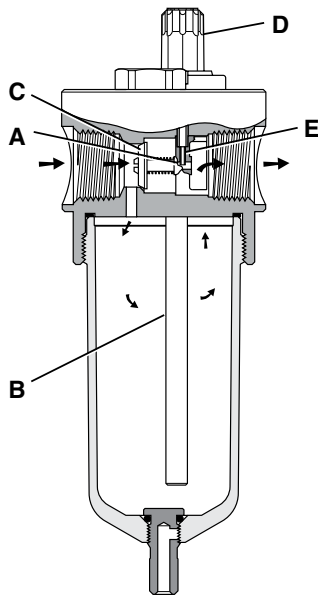
Ordering Information



BOLD ITEMS ARE MOST POPULAR.

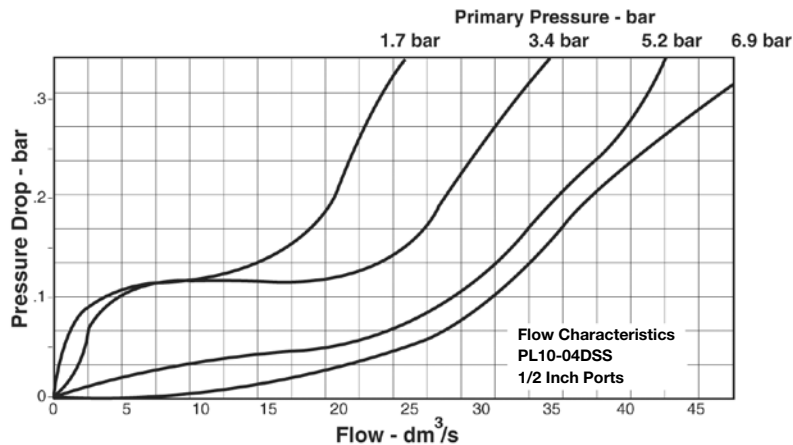
Technical Specifications – PL10

Operation



Air flowing through the unit goes through two paths. At low flow rates the majority of the air flows through the Venturi section (A). The rest of the air opens the check valve (C). The velocity of the air flowing through the Venturi section (A) creates a pressure drop. This lower pressure allows the oil to be forced from the reservoir through the pickup tube (B) and travels up to the metering screw (D). The rate of oil delivery is then controlled by adjusting the metering screw (D). Oil flows past the metering screw (D) and forms a drop in the nozzle tube (E). As the oil drops through the dome (F) and back into the Venturi section (A), it is broken up into fine particles. It is then mixed with the air flowing past the check valve (C) and is carried downstream. As the air flow increases the check valve (C) will open more fully. This additional flow will assure that the oil delivery rate will increase linearly with the increase of air flow.

Technical Information



L10 Filter Kits & Accessories

- Drain Kit –**
- Manual Twist Drain SA600Y7-1SS
- Pipe Nipple –**
- 1/2" NPT 316 Stainless Steel 616A28-SS
- 1/2" BSPT 316 Stainless Steel AC-4SS
- Sight Dome Kit** RKL10SS

Specifications

- Bowl Capacity** 118 cm³
- Port Threads** 1/2 Inch
- Pressure & Temperature Ratings –**
- Metal Bowl (D) 20.7 bar max.
-18°C to 66°C
- Metal Bowl (W) 0 to 17.2 bar
-18°C to 66°C

Note: Air must be dry enough to avoid ice formation at temperatures below 2°C.

Weight 850 g

Materials of Construction

- Body** 316 Stainless Steel
- Bowl** 316 Stainless Steel
- Dip Tube** 316 Stainless Steel
- Drain** 316 Stainless Steel
- Fill Plug** 316 Stainless Steel
- Seals** Fluorocarbon
- Sight Dome** Nylon
- Sight Gauge** Isoplast



Sales Offices

AE – United Arab Emirates, Abu Dhabi
Tel: +971 2 67 88 587
parker.me@parker.com

AR – Argentina, Buenos Aires
Tel: +54 3327 44 4129

AT – Austria, Wiener Neustadt
Tel: +43 (0)2622 23501-0
parker.austria@parker.com

AT – Austria, Wiener Neustadt (Eastern Europe)
Tel: +43 (0)2622 23501 970
parker.easteurope@parker.com

AU – Australia, Castle Hill
Tel: +61 (0)2-9634 7777

AZ – Azerbaijan, Baku
Tel: +994 50 2233 458
parker.azerbaijan@parker.com

BE – Belgium, Nivelles
Tel: +32 (0)67 280 900
parker.belgium@parker.com

BR – Brazil, Cachoeirinha RS
Tel: +55 51 3470 9144

BY – Belarus, Minsk
Tel: +375 17 209 9399
parker.belarus@parker.com

CA – Canada, Milton, Ontario
Tel: +1 905 693 3000

CH – Switzerland
Tel: +41 31 917 18 51
parker.switzerland@parker.com

CN – China, Shanghai
Tel: +86 21 5031 2525

CN – China, Beijing
Tel: +86 10 6561 0520

CZ – Czech Republic, Klecany
Tel: +420 284 083 111
parker.czechrepublic@parker.com

DE – Germany, Kaarst
Tel: +49 (0)2131 4016 0
parker.germany@parker.com

DK – Denmark, Ballerup
Tel: +45 43 56 04 00
parker.denmark@parker.com

ES – Spain, Madrid
Tel: +34 902 33 00 01
parker.spain@parker.com

FI – Finland, Vantaa
Tel: +358 (0)20 753 2500
parker.finland@parker.com

FR – France, Contamine-sur-Arve
Tel: +33 (0)4 50 25 80 25
parker.france@parker.com

GR – Greece, Athens
Tel: +30 210 933 6450
parker.greece@parker.com

HK – Hong Kong
Tel: +852 2428 8008

HU – Hungary, Budapest
Tel: +36 1 220 4155
parker.hungary@parker.com

IE – Ireland, Dublin
Tel: +353 (0)1 466 6370
parker.ireland@parker.com

IN – India, Mumbai
Tel: +91 22 6513 7081-85

IT – Italy, Corsico (MI)
Tel: +39 02 45 19 21
parker.italy@parker.com

JP – Japan, Fujisawa
Tel: +(81) 4 6635 3050

KR – South Korea, Seoul
Tel: +82 2 559 0400

KZ – Kazakhstan, Almaty
Tel: +7 3272 505 800
parker.easteurope@parker.com

LV – Latvia, Riga
Tel: +371 74 52601
parker.latvia@parker.com

MX – Mexico, Apodaca
Tel: +52 81 8156 6000

MY – Malaysia, Subang Jaya
Tel: +60 3 5638 1476

NL – The Netherlands, Oldenzaal
Tel: +31 (0)541 585 000
parker.nl@parker.com

NO – Norway, Ski
Tel: +47 64 91 10 00
parker.norway@parker.com

NZ – New Zealand, Mt Wellington
Tel: +64 9 574 1744

PL – Poland, Warsaw
Tel: +48 (0)22 573 24 00
parker.poland@parker.com

PT – Portugal, Leca da Palmeira
Tel: +351 22 999 7360
parker.portugal@parker.com

RO – Romania, Bucharest
Tel: +40 21 252 1382
parker.romania@parker.com

RU – Russia, Moscow
Tel: +7 495 645-2156
parker.russia@parker.com

SE – Sweden, Spånga
Tel: +46 (0)8 59 79 50 00
parker.sweden@parker.com

SG – Singapore
Tel: +65 6887 6300

SL – Slovenia, Novo Mesto
Tel: +386 7 337 6650
parker.slovenia@parker.com

SK – Slovakia
Tel: +421 484 162 252
parker.slovakia@parker.com

TH – Thailand, Bangkok
Tel: +662 717 8140

TR – Turkey, Merter/Istanbul
Tel: +90 212 482 91 06 or 07
parker.turkey@parker.com

TW – Taiwan, Taipei
Tel: +886 2 2298 8987

UA – Ukraine, Kyiv
Tel: +380 44 494 2731
parker.ukraine@parker.com

UK – United Kingdom, Warwick
Tel: +44 (0)1926 317 878
parker.uk@parker.com

US – USA, Cleveland
Tel: +1 216 896 3000

US – USA, Miami (Pan American Division)
Tel: +1 305 470 8800

VE – Venezuela, Caracas
Tel: +58 212 238 5422

ZA – South Africa, Kempton Park
Tel: +27 (0)11 961 0700
parker.southafrica@parker.com

