



SPRINGLOADED BACKPRESSURE REGULATOR TBVS8 THE MILLIBAR REGULATOR



MAIN FEATURES

- ss316L body
- ptfе-diaphragm
- viton seat
- 21 mm seat
- vacuum tight
- atex Ex II 2 GD
- easy to polish
- easy maintenance
- design according to EN 12516
- delivery according to PED

CHARACTERISTICS

| | |
|-------------------|---|
| Max. pressure | : 6 bar |
| | 6 bar design pressure |
| Setpressure range | : 5 – 500 mbar |
| | 6 bar design pressure |
| Underpressure | : vacuum |
| Seat diameter | : 21 mm |
| Seat leakage | : EN12266, rate a, p12 ANSI Class VI |

Materials:

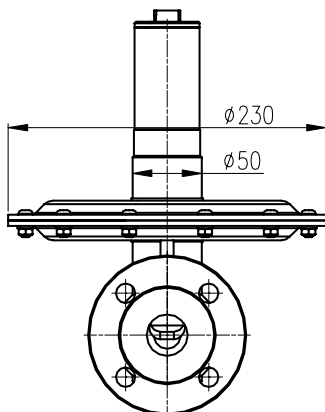
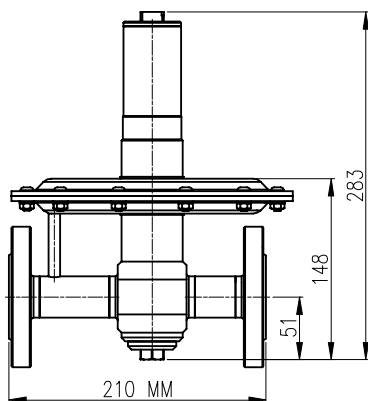
| | |
|-------------------|---|
| • Body & Trim | : ss 316L |
| • Springhousing | : ss 316L |
| • Stem guide | : ptfе |
| • Valve housing | : ptfе |
| • Valve seat ring | : viton |
| • Diaphragm | : ptfе |
| Connections | : 1" bspp female 1" npt female flanges ansi 1" 150# rf flanges din DN25 PN16 tri-clamps 1" bsod |

Weight:

| | |
|-------------------|---------------------|
| • screwed models | : 6,5 kg |
| • flanged models | : 8,5 kg |
| Temperature range | : -20°C to +140°C * |

Do not use teflon tape or anaerobic sealing compounds on the bspp threads.

* Actual range depends on choice of seat- and seal material.



VALVE SEAT O-RING

Viton o-rings are standard.

Options:

- EPDM (compound FS-EPDM70-USP05) to FDA 21CFR, USP24 CL VI
- Kalrez (compound 6230) to FDA 21CFR, USP24 CL VI

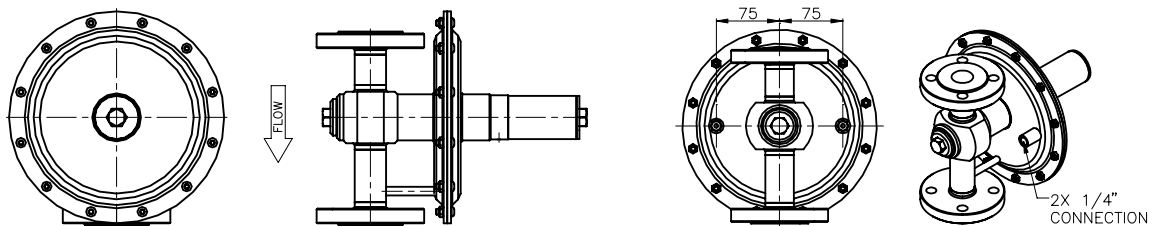
CLEANING

This regulator is ultrasonically cleaned and degreased. Oxygen cleaning based on ASTM-G93 Level C / CGA 4.1 is optional.

INSTALLATION

Preferably in a vertical mode to allow draining.

From a control point of view there is little or no difference between horizontal or vertical mounting.



mounting mode (preferably)

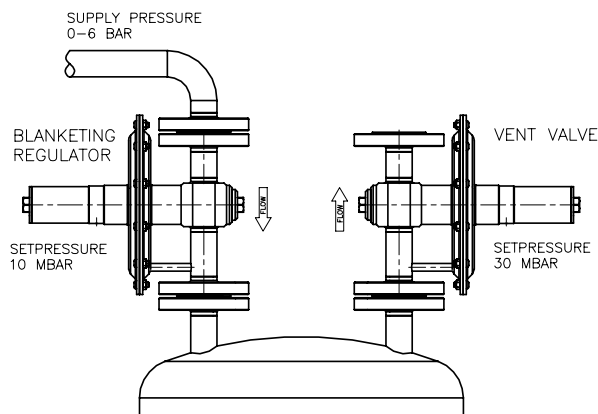
gauge connections (option)

MAINTENANCE

- No need to remove LoBär from the system for maintenance / repair.
- No special tools required.

RECOMMENDATIONS

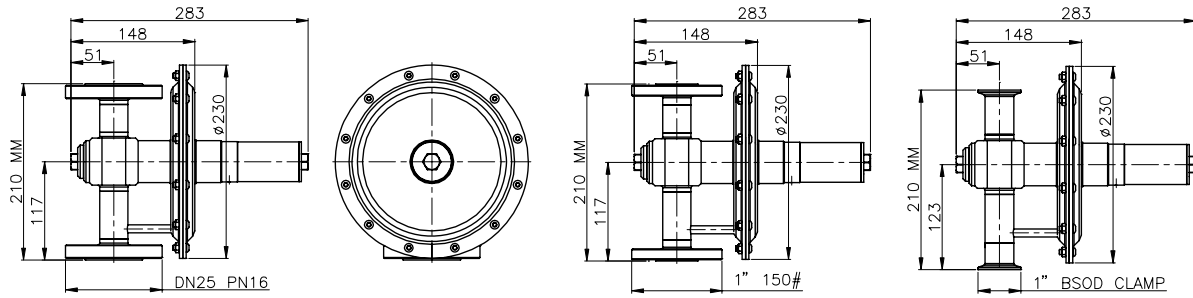
We recommend to set the ventvalve at least 20 mbar higher than the outletpressure of the supply regulator.



GENERAL INFORMATION

- Setpoint is the point where the valve comes loose from the seat.
- Failure of the tank blanketing regulator must be taken into account when considering possible causes of over-pressure in a tank.

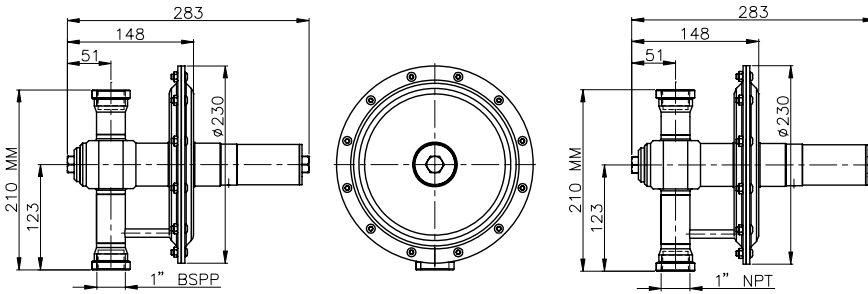
DIMENSIONS



DN25 PN16 – EN 1092-1/ Type 11 / B1

1" 150# - ANSI B16.5

1" BSOD CLAMP



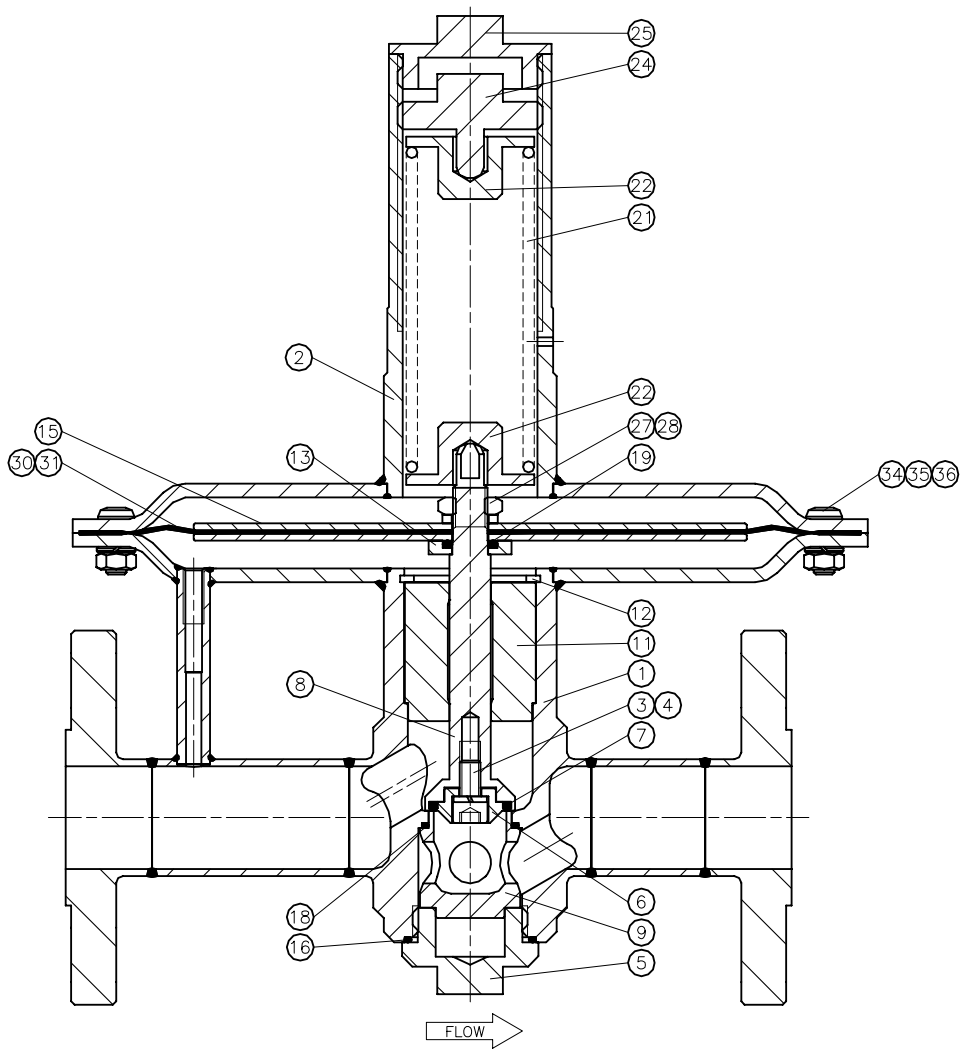
1" BSPP – ISO 228-1

1" NPT – ANSI B1.20.1

All dimensions are in millimeters.

FLOWTABLE

| Setpressure | Flow (Nm ³ /hr.) | | | | | |
|-------------------|-----------------------------|---------|---------|----------|----------|----------|
| | 10 mbar | 20 mbar | 40 mbar | 100 mbar | 200 mbar | 500 mbar |
| 25 % overpressure | 5,5 | 12 | 19 | 33 | 54 | 110 |
| 50 % overpressure | 7,5 | 15 | 27 | 42 | 68 | 130 |
| 75% overpressure | 8,5 | 17,5 | 31,4 | 50 | 84 | 140 |
| 100% overpressure | 11 | 19 | 37 | 54 | 93 | 150 |



ORDERING INFORMATION

example: TBVSFA8-02-2-TTV-P4

| TBVS | | FA8 | -02 | -2 | -T | T | V | -P4 |
|---------------------|-------|---|--------------------|---|-----------------|-----------------|---|--|
| serie | inlet | connection | material | setpressure range | o-rings | dia-phragm | seat | options |
| TBVS = 6 bar | | B8 = 1" bspp N8 = 1" npt FA8 = 1" 150# ansi flanges FD8 = DN25 PN16 din flanges TC8 = 1" bsod tri-clamps | 02 = ss316L | 1 = 5 – 10 mbar 2 = 10 – 50 mbar 3 = 20 –200 mbar 4 = 50 –500 mbar | T = ptfe | T = ptfe | V = viton Options: E = epdm K = kalrez | FS = factoryset & locked P4 = wetted parts polished 0,4 μ P8 = wetted parts polished 0,8 μ |

When placing an order please advise full process data.

Due to continuous development of our product range, we reserve the right to alter the dimensions and information contained in this leaflet as required. RHPS may suggest certain materials for certain applications. These suggestions are based on compatibility information provided by material suppliers or on previous experience. However, RHPS does not guarantee the material to be compatible with a specific media, this will be the sole responsibility of the user.

1-9-2008



Telefoon (+)31(0)252 620005
Fax (+)31(0)252 620527
info@rhps.nl
www.rhps.nl