



LOW PRESSURE REGULATOR TBR54

ULTRASENSITIVE • MAXIMUM CORROSION RESISTANCE

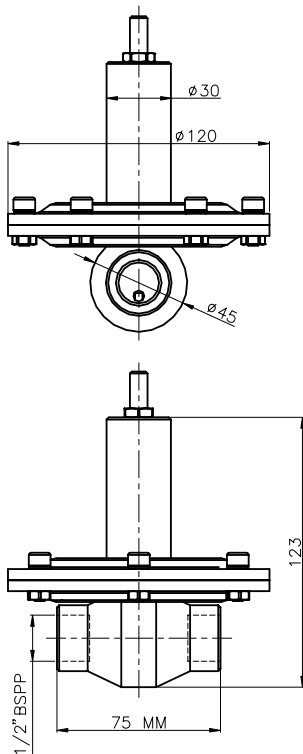


MAIN FEATURES

- ss 316L
- kalrez seat
- ptfe diaphragm
- Cv 0.32
- bubble tight shut-off
- large diaphragm to seat ratio
- millibar control
- design according to EN 12516
- delivery according to PED

CHARACTERISTICS

Inlet pressure	: 6 bar
	: 6 bar design pressure
Outlet ranges	: 50 – 800 mbar
	: 1 bar design pressure
Seat diameter	: 4 mm
Cv (Kv)	: 0.32 (0.27)
Materials:	
• Body, Trim	: ss 316L
• Seat insert	: kalrez 6230
• Diaphragm	: ptfe
Connections	: 1/2" bspp
	flanges ansi 1/2" 150#
	flanges din DN15 PN16
	tri-clamps 1/2" bsod
Weight	: 1.6 kg (without flanges)
Temperature range	: -20°C to +120°C*



CLEANING

This regulator is ultrasonically cleaned and degreased. Oxygen cleaning based on ASTM-G93 Level C / CGA 4.1 is optional.

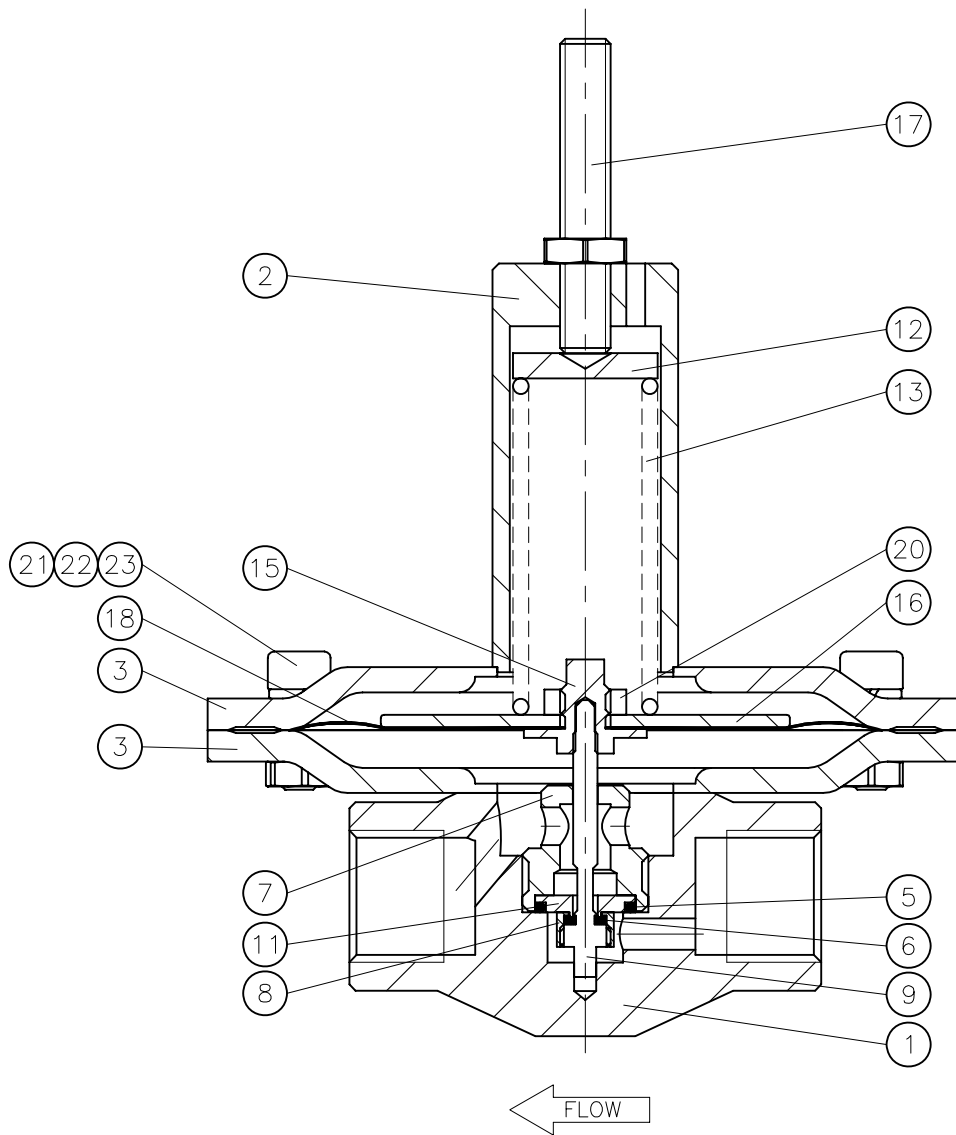
Gauge ports are not possible.

Do not use teflon tape or anaerobic sealing compounds on the bspp threads.

* Actual range depends on choice of seat- and seal material.



Telefoon (+)31(0)252 620005
Fax (+)31(0)252 620527
info@rhps.nl
www.rhps.nl



ORDERING INFORMATION

example: TBR SB4-02-3-TTK

TBRS		B4	- 02	- 3	- T	T	K
serie	inlet	connections	material	outlet ranges	o-rings	dia-phragm	seat
TBRS	= 6 bar	B4 = ½" bspp FA4 = ½" 150# ansi flanges FD4 = DN15 PN16 din flanges TC4 = ½" bsod tri-clamps	02 = ss316L	3 = 50 – 100 mbar 4 = 50 – 200 mbar 5 = 50 – 500 mbar 6 = 50 – 800 mbar	T = ptfe	T = ptfe	K = kalrez

When placing an order please advise full process data.

Due to continuous development of our product range, we reserve the right to alter the dimensions and information contained in this leaflet as required. RHPS may suggest certain materials for certain applications. These suggestions are based on compatibility information provided by material suppliers or on previous experience. However, RHPS does not guarantee the material to be compatible with a specific media, this will be the sole responsibility of the user.

1-9-2008



Telefoon (+)31(0)252 620005
 Fax (+)31(0)252 620527
 info@rhps.nl
 www.rhps.nl