

HIGH FLOW PRESSURE REGULATOR RS(H)15

HIGH ACCURACY • BALANCED VALVE

For medium and high pressures



MAIN FEATURES

- ss 316L
- diaphragm or piston sensing
- balanced valve
- high flow
- Cv 7.3
- bubble tight shut-off
- design according to EN 12516
- delivery according to PED

CHARACTERISTICS

Inlet pressure : 70 bar, 400 bar

Outlet ranges:

- Diaphragm sensing : 0 – 20 bar
- Piston sensing : 0 – 250 bar

Seat diameter : 19 mm

Cv (Kv) : 7.3 (6.3)

Materials:

- Body & Trim : ss 316L
- Springhousing : ss 316L
- Seat insert : RS15: elastomer
RSH15: pctfe, peek
- Seals & Diaphragm : elastomer

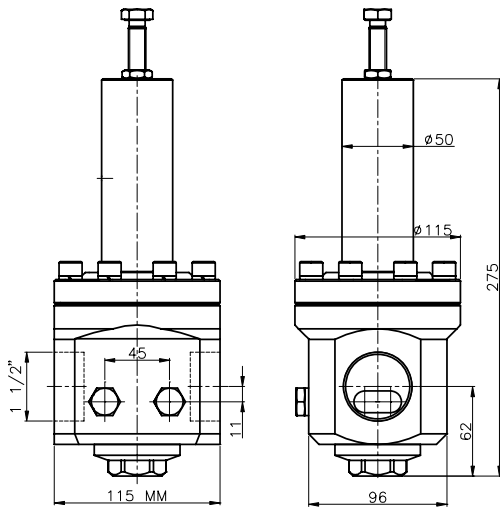
Connections:

- Line : 1½" bspp, npt
flanges to DIN / ANSI B16.5

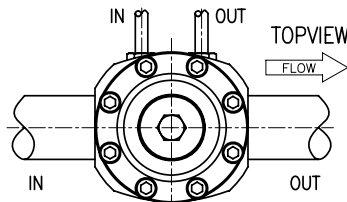
• Gaugeports : 2x ¼" npt

Weight : 10 kg (without flanges)

Temperature range : -20°C to +80°C *



PORTING STYLE



CLEANING

This regulator is ultrasonically cleaned and degreased.

Oxygen cleaning based on

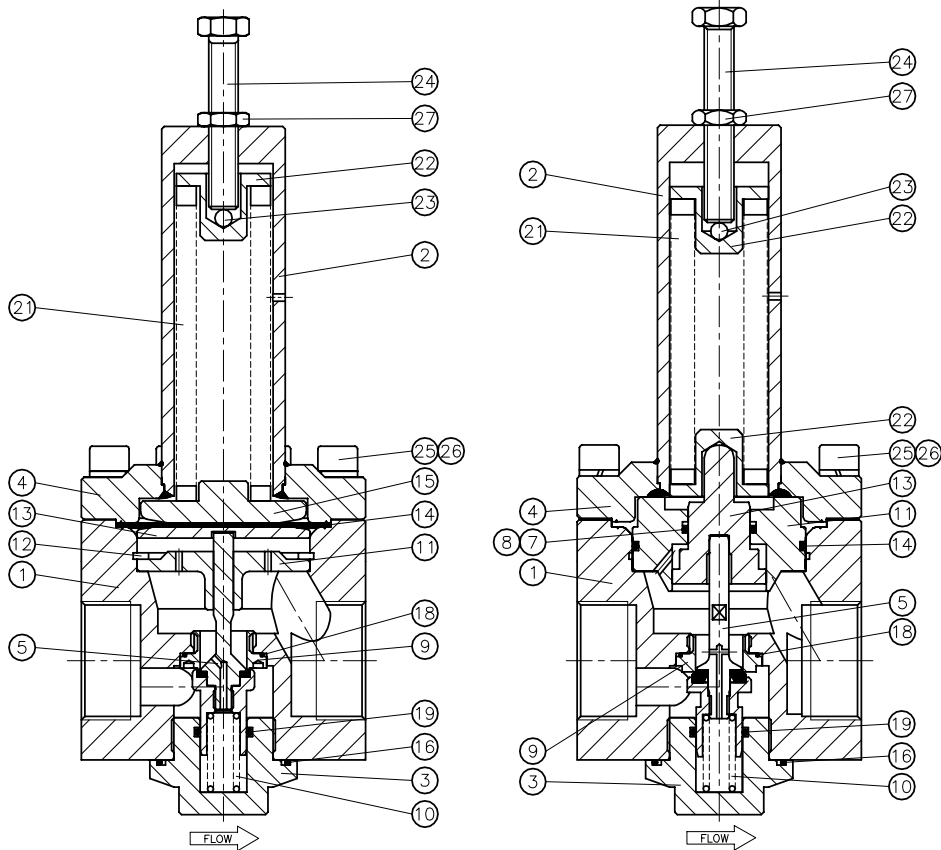
ASTM-G93 Level C / CGA 4.1 is optional.

Do not use teflon tape or anaerobic sealing compounds on the bspp threads.

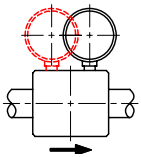
* Actual range depends on choice of seat- and seal material.



Telefoon (+)31(0)252 620005
Fax (+)31(0)252 620527
info@rhps.nl
www.rhps.nl



GAUGEPORT(S) standard:



Only one gauge Ø63 fits directly into the body.

ORDERING INFORMATION example: RSHB15-02-4-NNK

RSH		B15	- 02	- 4	- N	N	K
serie	inlet	connection	material	outlet range	o-rings	dia-phragm	seat
RS RSH	= 70 bar = 400 bar*	B15 = 1½" bspp N15 = 1½" npt FA15 = 1½" ansi flanges* FD15 = DN40 din flanges*	02 = ss316L	Diaphragm sensing: 1 = 0 - 3 bar 2 = 0 - 5 bar 3 = 0 - 10 bar 4 = 0 - 20 bar ----- Piston sensing: 5 = 0 - 40 bar 6 = 0 - 100 bar 7 = 0 - 180 bar 8 = 0 - 250 bar	N = nitrile E = epdm V = viton	N = nitrile E = epdm V = viton	RS: N = nitrile E = epdm V = viton RSH: K = pctfe P = peek
* Downstreamside 250 bar design pressure		* advise rating				piston o-rings N = nitrile E = epdm V = viton	

See also LPRS datasheet for high accuracy models.

When placing an order please advise full process data.

Due to continuous development of our product range, we reserve the right to alter the dimensions and information contained in this leaflet as required. RHPS may suggest certain materials for certain applications. These suggestions are based on compatibility information provided by material suppliers or on previous experience. However, RHPS does not guarantee the material to be compatible with a specific media, this will be the sole responsibility of the user.

25-08-2008



Telefoon (+)31(0)252 620005
Fax (+)31(0)252 620527
info@rhps.nl
www.rhps.nl